

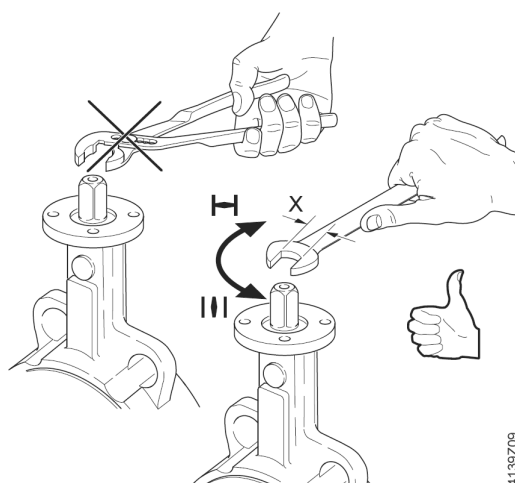
de	Montageanleitung
en	Mounting instructions
fr	Instructions de montage
sv	Monteringsinstruktion
nl	Montage-handleiding
it	Istruzioni di montaggio
fi	Asennusohje
es	Instrucciones de montaje
da	Monteringsvejledning
pl	Instrukcja montażu
cz	Montážní návod
hu	Szerelési útmutató
el	Οδηγίες εγκατάστασης
ru	Инструкция по установке
zh	安裝指導

Handversteller
Manual adjuster
Levier manuel à crans
Handmanöver
Handverstelling
Comando manuale
Käsiohjain
Mando manual
Betjeningshåndtag
Dźwignia sterowania ręcznego
Páka pro ruční nastavení
Kézi állítókar
Χειροκίνητος μοχλίσμός
Ручной регулятор
手柄式开关装置

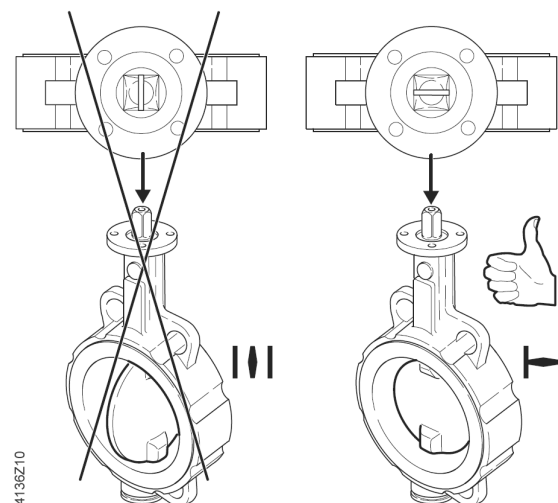
ASK46.1
ASK46.2
ASK46.3



1

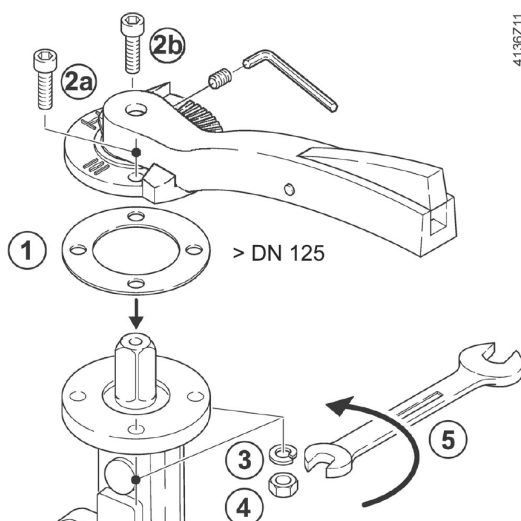


4136Z09



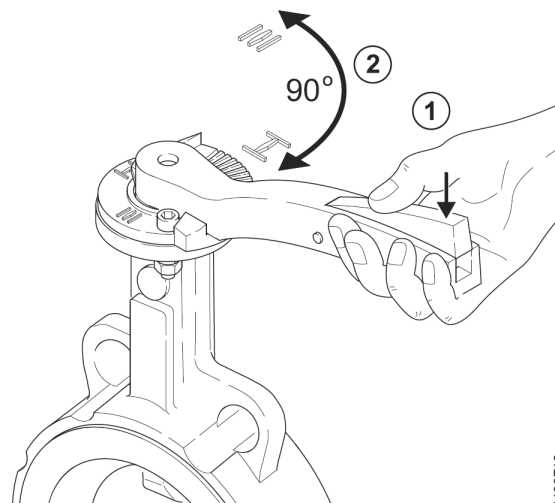
4136Z10

2

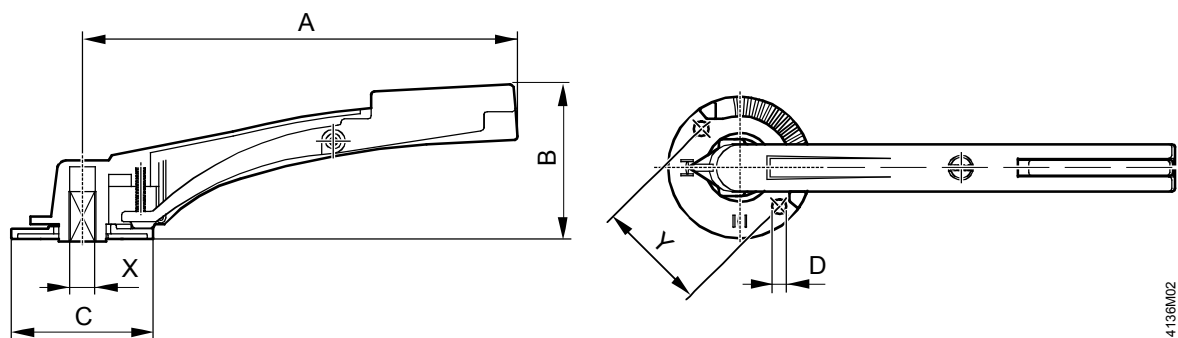


4136Z11

3



4136Z12



4136M02

	DN	A	B	C	D Ø	X □	Y	$\frac{5}{8}$ kg [kg]
ASK46.1	40...65	155	68.5	67.5	5.5	11	42	0.11
ASK46.2	80...125	195	79.5	72.5	6.5	14	50	0.16
ASK46.3	150...200	276	98	90	9.0	17	70	0.50