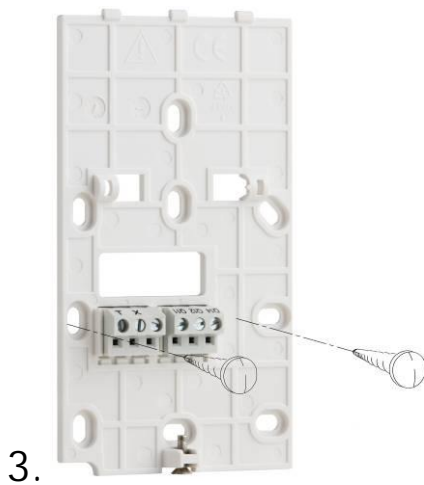
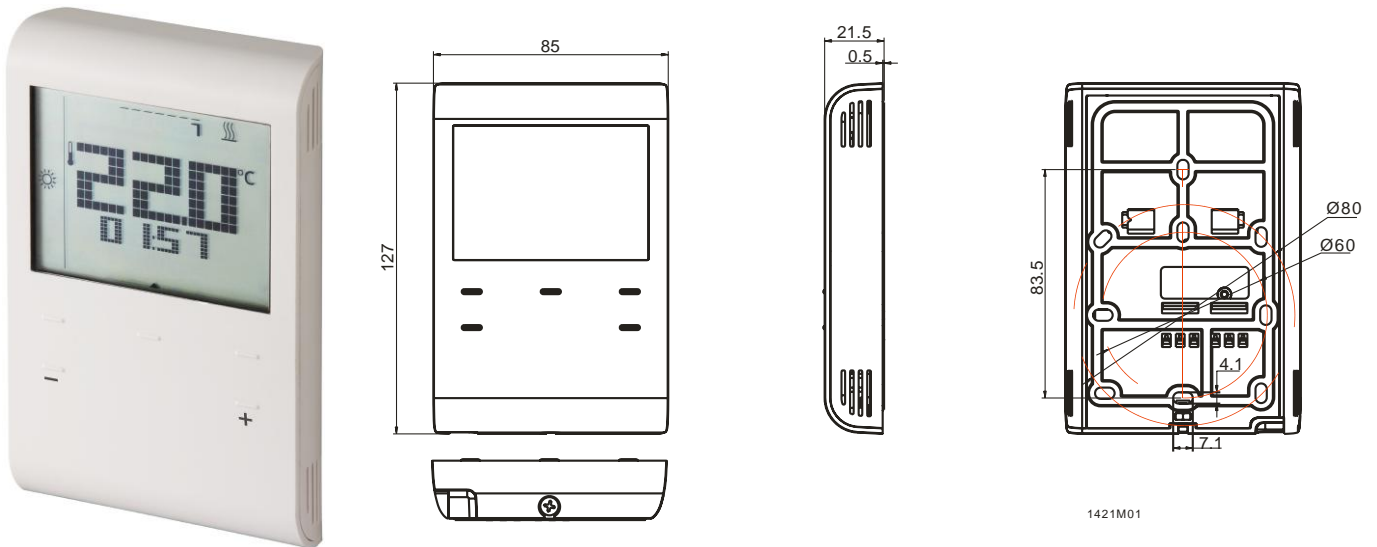
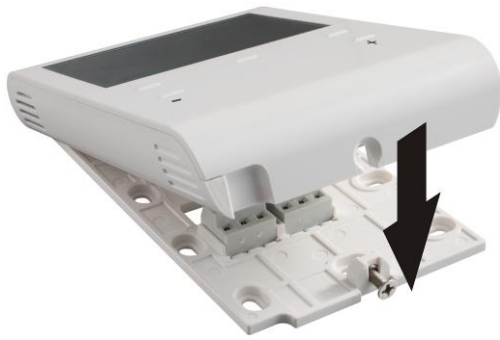


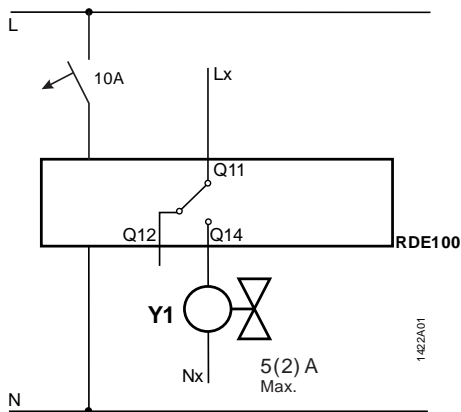
RDE100..



5.



RDE100

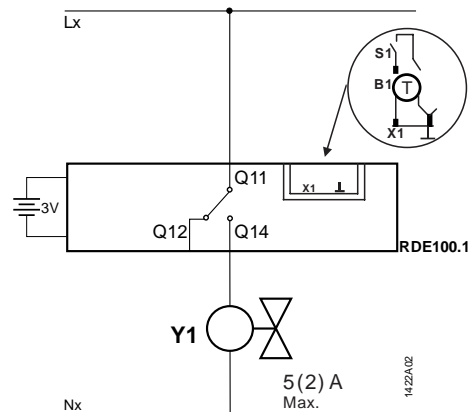


⚠ L-N AC 230 V

6.

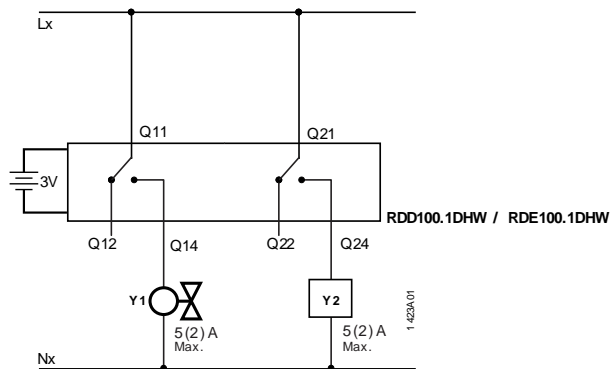


RDE100.1



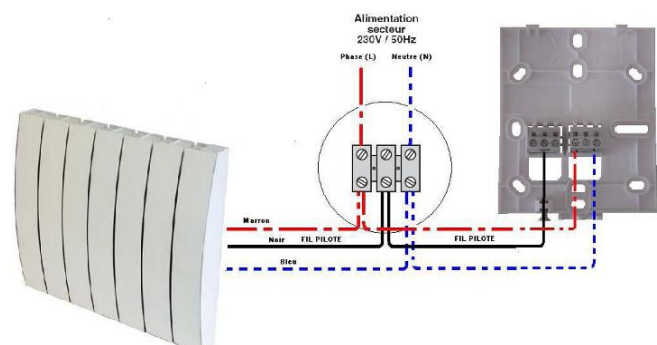
⚠ Lx-Nx 24...230 V

RDD100.1DHW / RDE100.1DHW



⚠ Lx-Nx 24...230 V

RDE100FP (Fil Pilote)



⚠ L-N AC 230 V



Max. 1.5 min.