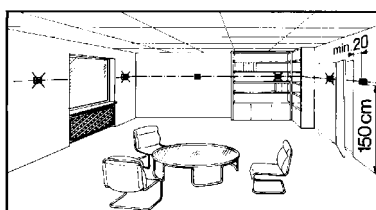
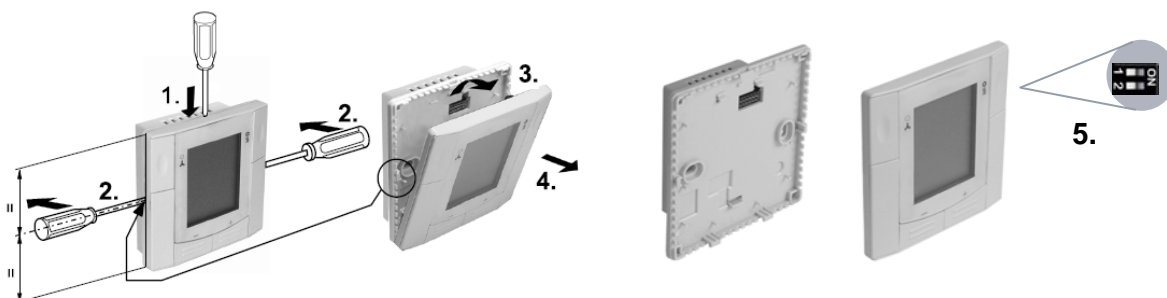


**RDF300...**  
**RDF340...**  
**RDF400...**

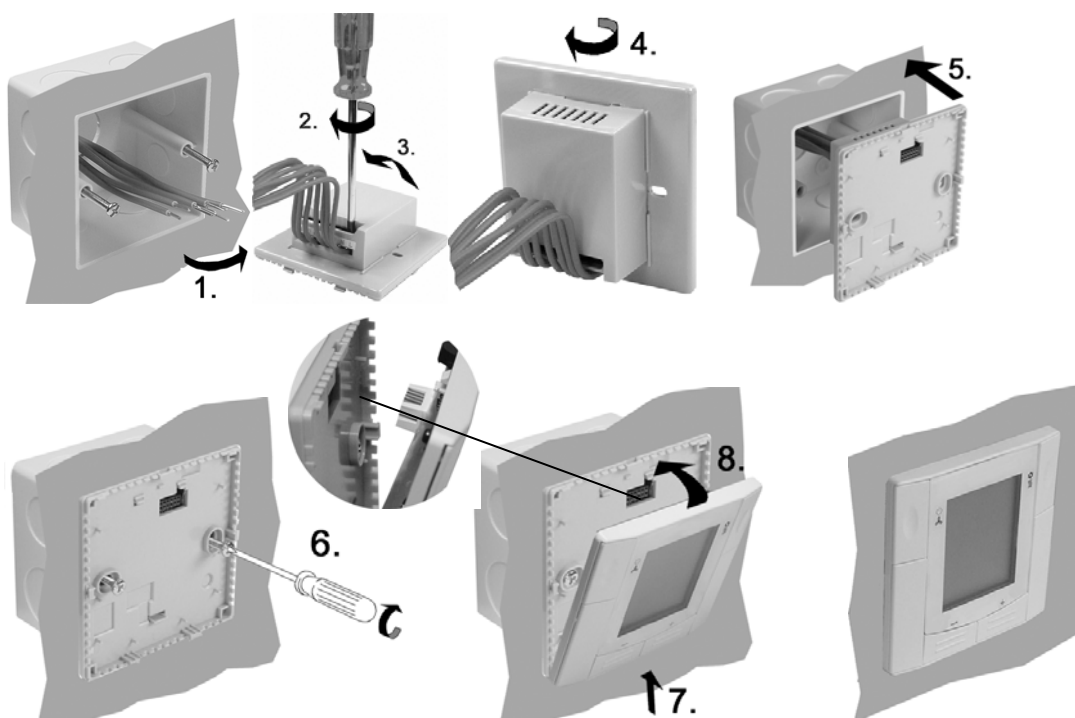
## Mounting Location of Thermostat / 温控器安装位置



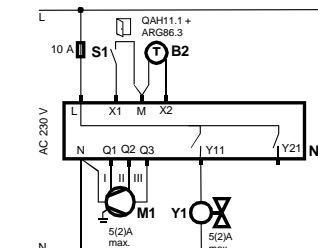
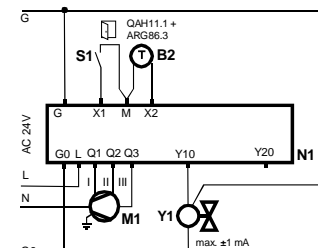
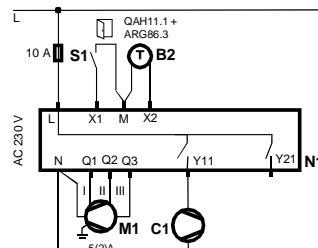
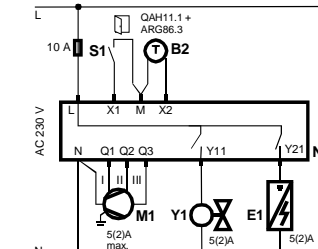
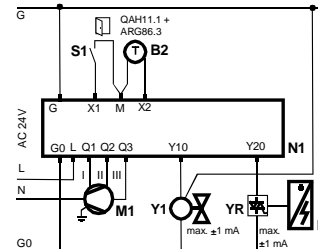
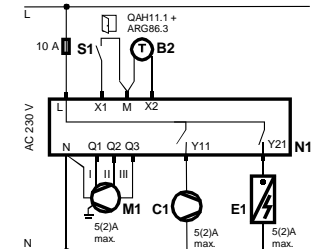
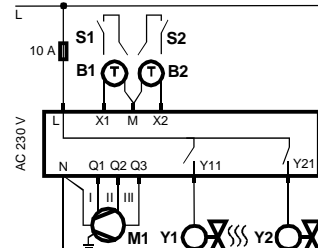
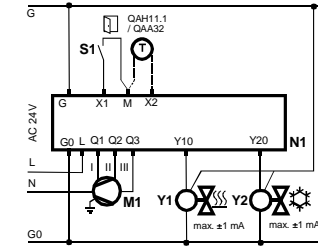
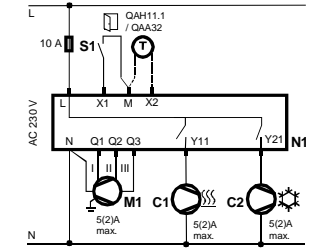
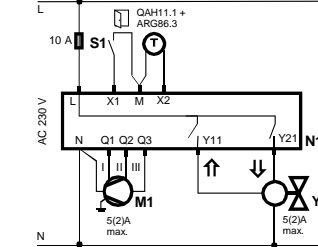
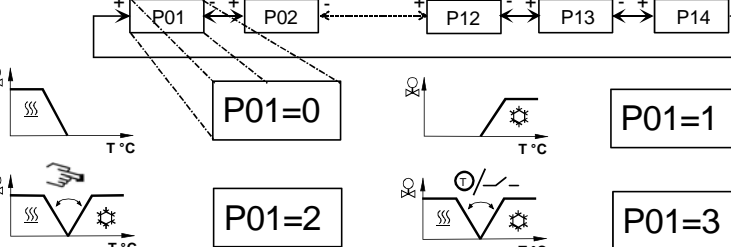


## Preparation and Deliverables / 安装前准备



## Semi-Flush-Mounting / 嵌入式安装



Application 应用			
	RDF300... / RDF400...	RDF340	RDF300... / RDF400...
2-pipe 两管制 en zh	 <p><b>Δ AC 230 V</b></p>	 <p><b>G - G0 AC 24 V</b> <b>Δ L - N AC 230 V</b></p>	 <p><b>Δ AC 230 V</b></p>
2-pipe & el. heater 两管制，带电加热 en zh	 <p><b>Δ AC 230 V</b></p>	 <p><b>G - G0 AC 24 V</b> <b>Δ L - N AC 230 V</b></p>	 <p><b>Δ AC 230 V</b></p>
4-pipe 四管制 en zh	 <p><b>Δ AC 230 V</b></p>	 <p><b>G - G0 AC 24 V</b> <b>Δ L - N AC 230 V</b></p>	 <p><b>Δ AC 230 V</b></p>
2-pipe, 3 position output 两管制，三位控制输出 en zh	 <p><b>Δ AC 230 V</b></p>	 <p><b>P01=0</b> <b>P01=1</b> <b>P01=2</b> <b>P01=3</b> <b>P01=4</b></p>	

## Legend: / 图例

N1	RDF3xx / RDF4xx	RDF3xx / RDF4xx
M1	3 Steps-Fan	三速风机
Y1,Y2	Valve	阀门
C1,C2	Compressor	压缩机
E1	Electro heater	电加热
S1	Operating mode switch-over contact (e.g. key card)	工作模式转换开关 (例如：门卡)
YR	Current valve	电流阀
B2	Heat/cool changeover sensor	制冷/制热工况转换传感器

## Dimensions / 尺寸

