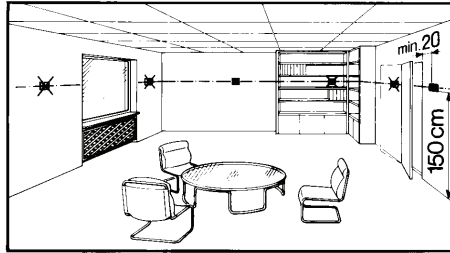
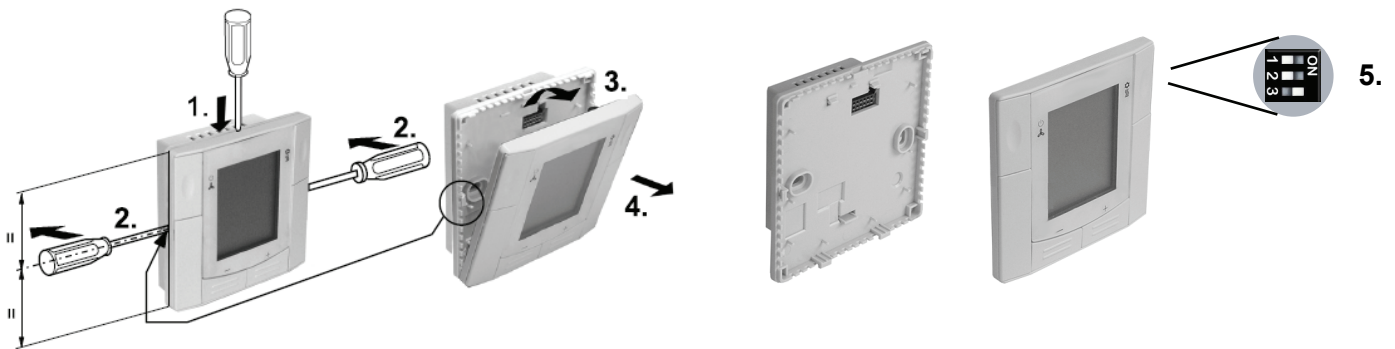


## RDF301...

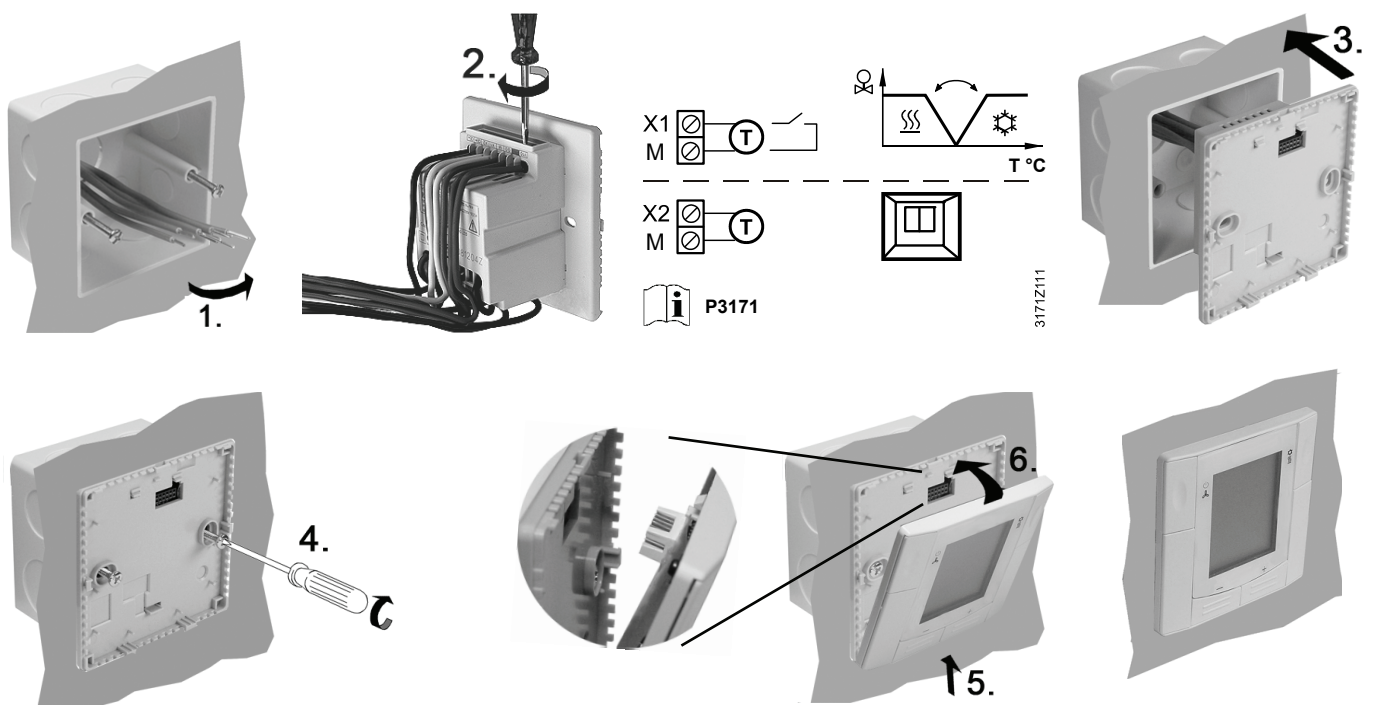
### Mounting Location of Thermostat / Montageort des Thermostaten / 温控器安装位置



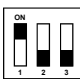
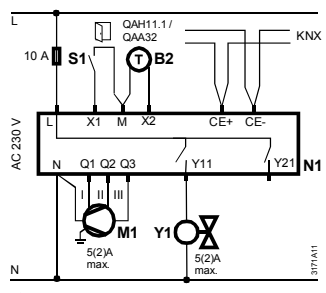
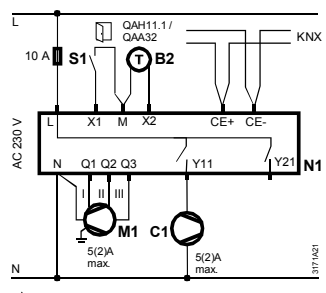
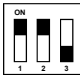
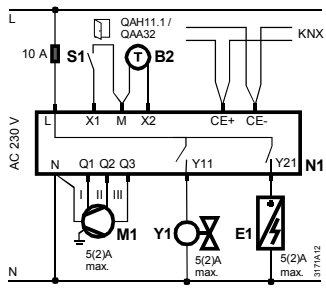
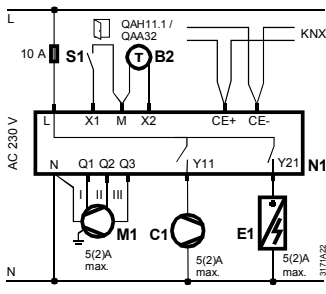
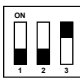
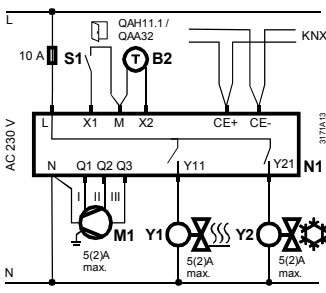
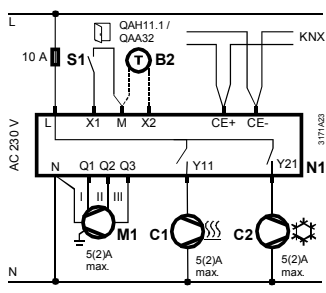
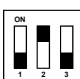
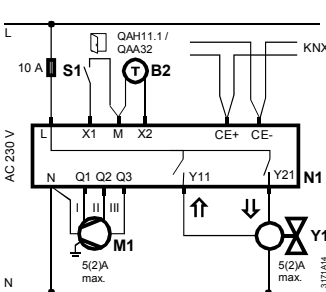
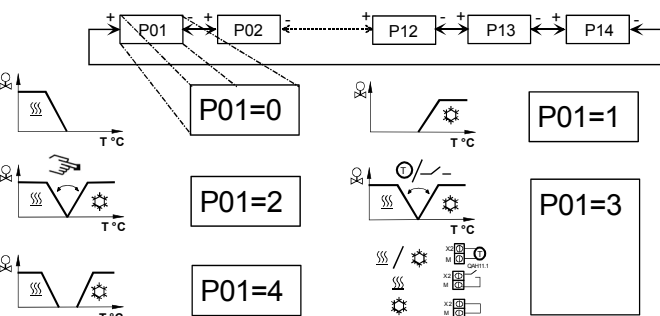
## Preparation and Deliverables / Vorbereitung und durchzuführende Arbeiten / 安装前准备



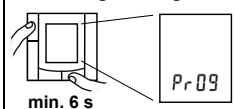
### Semi-Flush-Mounting / Unterputz-Montage / 嵌入式安装



# Wiring Diagrams / Anschlussschaltpläne / 接线图

Application Applikation 应用		
 2-pipe 2-Rohr 两管制 en de zh	 <b>AC 230 V</b>	 <b>AC 230 V</b>
 2-pipe & el. heater 2-Rohr & el. Heizung 两管制，带电加热 en de zh	 <b>AC 230 V</b>	 <b>AC 230 V</b>
 4-pipe 4-Rohr 四管制 en de zh	 <b>AC 230 V</b>	 <b>AC 230 V</b>
 2-pipe, 3 position output 2-Rohr, 3-Punkt-Ausgang 两管制，三位控制输出 en de zh	 <b>AC 230 V</b>	<b>Control sequence / Steuersequenz / 选择控制序列</b>  → P3171

## KNX Programming mode



## Legend

N1	RDF301
M1	3-speed fan
Y1,Y2	Valve
C1,C2	Compressor
E1	Electrical heater
S1	Operating mode switch-over contact (e.g. key card)
B2	External room / return air temperature sensor

## Legende

RDF301
3-stufiger Ventilator
Ventil
Kompressor
El. Heizung
Betriebsart-Umschalter (z.B. Zugangskarte)
Externer Raum- / Rückluft-Temperatur-Fühler

## 图例

RDF301
三速风机
阀门
压缩机
电加热
工作模式转换开关 (例如：门卡)
外置/回风温度传感器

## Dimensions / Abmessungen / 尺寸

