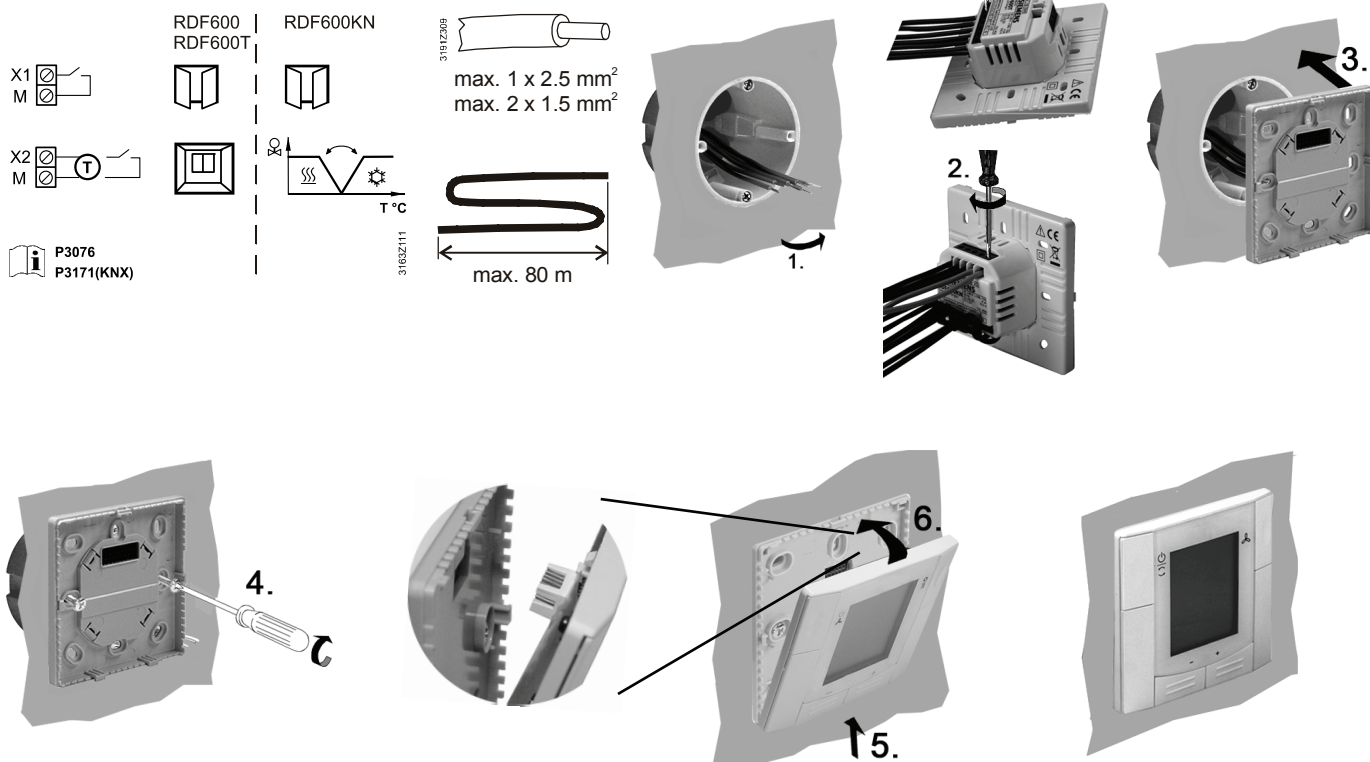
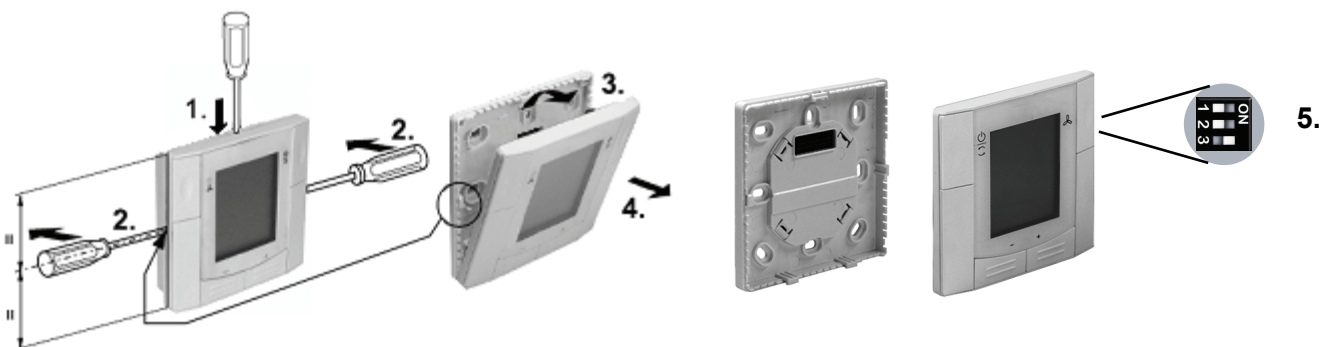
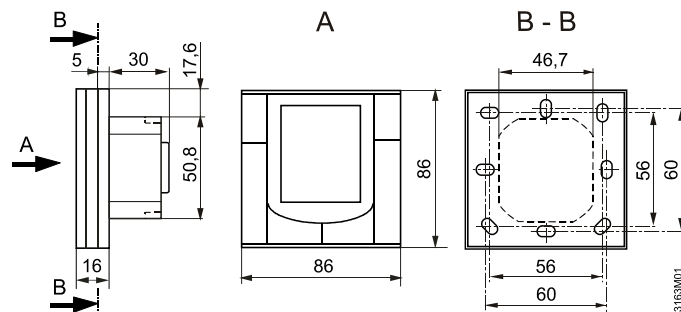
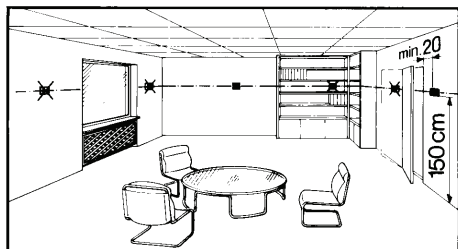
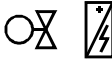

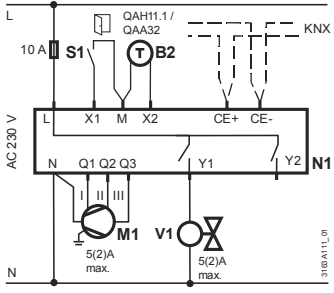
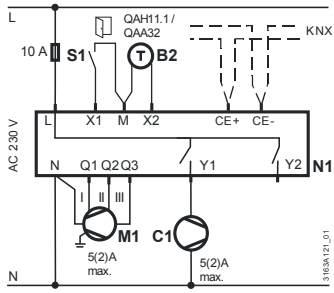
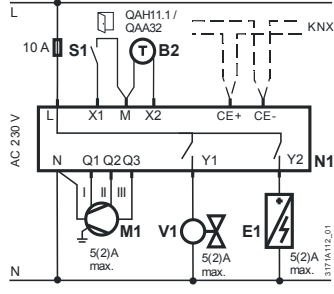
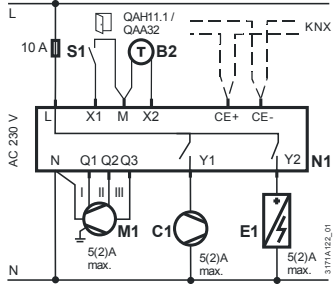
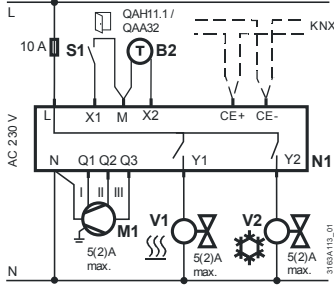
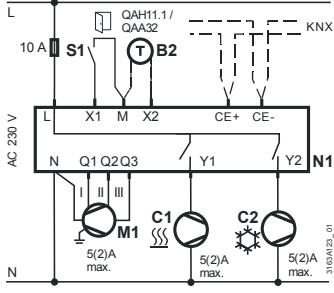
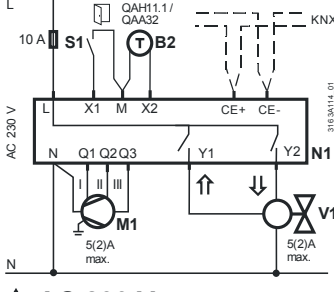
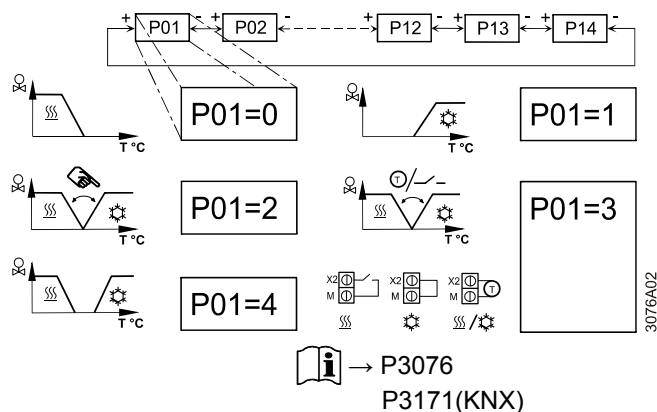


**RDF600**  
**RDF600T**  
**RDF600KN**



RDF600 RDF600T	RDF600KN		
<div data-bbox="167 168 223 235"></div> <div data-bbox="311 168 406 235"></div> <div data-bbox="438 168 470 235">KNX</div> <div data-bbox="113 250 300 398"> en 2-pipe de 2-Rohr fr 2 tubes es 2-tubos tr 2-borulu </div>		 <p>AC 230 V</p>	 <p>AC 230 V</p>
<div data-bbox="167 537 223 604"></div> <div data-bbox="311 537 406 604"></div> <div data-bbox="438 537 470 604">KNX</div> <div data-bbox="113 613 300 761"> en 2-pipe with electric heater de 2-Rohr mit Elektro-Heizung fr 2 tubes chaud électrique es 2-tubos con batería eléctrica tr 2-borulu elk. ısıtıcılı </div>		 <p>AC 230 V</p>	 <p>AC 230 V</p>
<div data-bbox="167 922 223 990"></div> <div data-bbox="311 922 406 990"></div> <div data-bbox="438 922 470 990">KNX</div> <div data-bbox="113 999 300 1146"> en 4-pipe de 4-Rohr fr 4 tubes es 4-tubos tr 4-borulu </div>		 <p>AC 230 V</p>	 <p>AC 230 V</p>
<div data-bbox="167 1308 223 1375"></div> <div data-bbox="311 1308 406 1375"></div> <div data-bbox="438 1308 470 1375">KNX</div> <div data-bbox="113 1384 300 1532"> en 2-pipe, 3-position output de 2-Rohr, 3-Punkt Ausgang fr 2 tubes, sortie 3pts es 2-tubos, salida a 3 puntos tr 2-borulu, 3-konumlu çıkış </div>		 <p>AC 230 V</p>	



### RDF600KN KNX Programming mode

