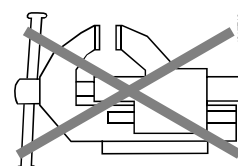
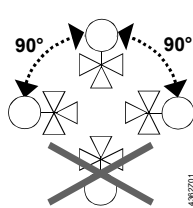
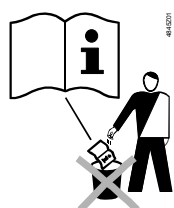


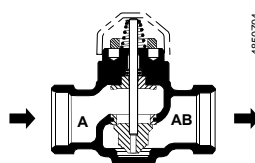
**de** Montageanleitung  
**en** Mounting instructions  
**fr** Instructions de montage  
**sv** Monteringsinstruktion  
**nl** Montage-handleiding  
**it** Istruzioni di montaggio  
**fi** Asennusohje  
**es** Instrucciones de montaje  
**da** Monteringsvejledning  
**pl** Instrukcja montażu  
**cz** Montážní návod  
**hu** Szerelési útmutató  
**el** Οδηγίες εγκατάστασης  
**zh** 安裝指導

**Ventile PN16**  
**Valves PN16**  
**Vannes PN16**  
**Ventiler PN16**  
**Afsluiters PN16**  
**Valvole PN16**  
**Venttiilit PN16**  
**Válvulas PN16**  
**Ventiler PN16**  
**Zawory PN16**  
**Ventily PN16**  
**Szelepek PN16**  
**Βάνες PN16**  
**阀门 PN16**

**VVP47...S**  
**VXP47...S**  
**VMP47...S**

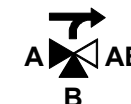
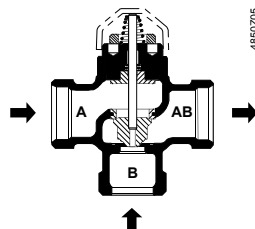


## VVP47...S



A → AB 0...100%

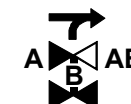
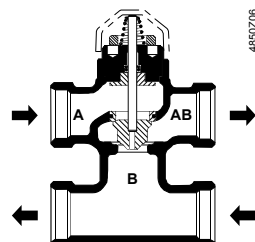
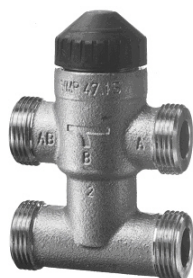
## VXP47...S



A → AB 0...100%  
B → AB 70...0%



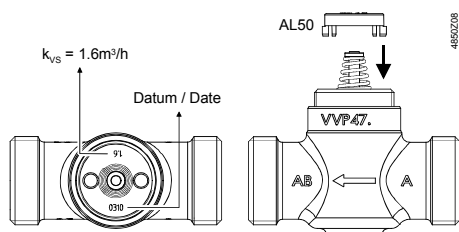
## VMP47...S



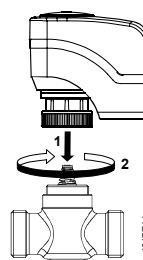
A → AB 0...100%  
B → AB 70...0%



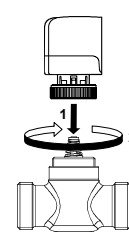
## AL50



## V...P47...S + SSP... / SFP...



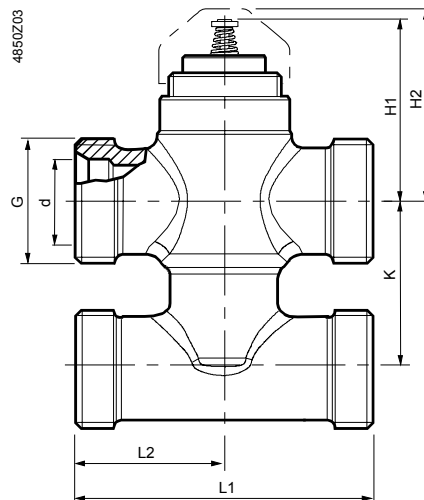
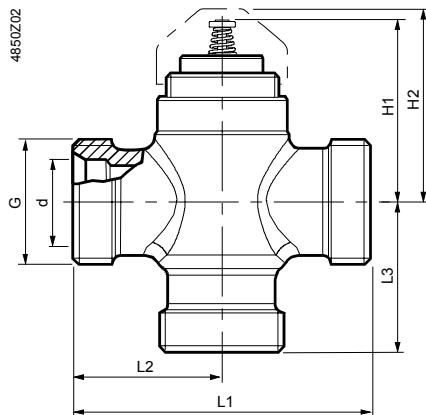
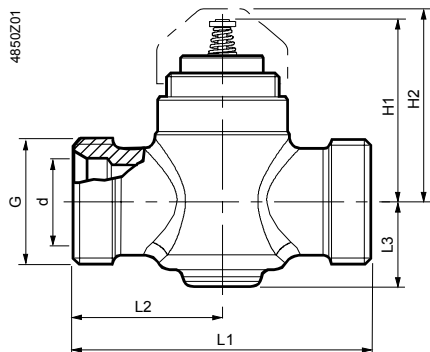
## V...P47...S + STP... / STS...



# VVP47...S

# VXP47...S

# VMP47...S



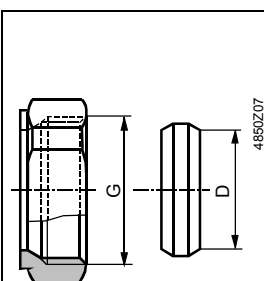
	DN	G	d	H1	H2	L1	L2	L3	[kg]
		["]	[mm]	[mm]	[mm]	[mm]	[mm]	[mm]	[kg]
VVP47.10-0.25S...1.6S	10	G½B	15.2	46	≈ 49	60	30	19	0.32
VVP47.15-2.5S	15	W 11/8 - 14	22.2	46	≈ 49	65	32.5	19	0.34



	DN	G	d	H1	H2	L1	L2	L3	[kg]
		["]	[mm]	[mm]	[mm]	[mm]	[mm]	[mm]	[kg]
VXP47.10-0.25S...1.6S	10	G½B	15.2	46	≈ 49	60	30	30	0.32
VXP47.15-2.5S	15	W 11/8 - 14	22.2	46	≈ 49	65	32.5	32.5	0.37



	DN	G	d	H1	H2	K	L1	L2	[kg]
		["]	[mm]	[mm]	[mm]	[mm]	[mm]	[mm]	[kg]
VMP47.10-0.25S...1.6S	10	G½B	15.2	46	≈ 49	40	60	30	0.40
VMP47.15-2.5S	15	W 11/8 - 14	22.2	46	≈ 49	40	65	32.5	0.48



	DN	G	CONEX	D
		["]		[mm]
VVP47.10-0.25S ... 1.6S VXP47.10-0.25S ... 1.6S VMP47.10-0.25S ... 1.6S	10	G½	<b>Conex 63</b>	15
VVP47.15-2.5S VXP47.15-2.5S VMP47.15-2.5S	15	W 11/8 - 14	<b>Conex 65</b>	22